



Smart Technology, Made to Care

Programming
Guide v1.0

Reach

Wireless waterproof Pull Cord



The CAIR Reach is a waterproof, wireless, easy grab long length pull cord switch for indoor and outdoor environments.

Ideal for bedrooms, bathrooms or sitting rooms, the Reach can be strategically placed around the home to add an extra level of safety and reassurance in case of emergency, particularly for users who find it difficult to press a button, or for locations where wearing a personal alarm isn't ideal.

Installing the Reach

1. Collect all fixings and remove the faceplate using the protruding tab.
2. Using the printed box insert as a template, mark the ceiling/wall where the 2 mounting screws will fit and drill 2 pilot holes. Be sure to locate a joist if mounting to the ceiling.
3. Using the provided fixings, attach the Reach to the ceiling/wall, ensuring it is secure,
4. Fit the handle cord to the cord connector. Pass the cord through the empty hole in the connector, adjust so that the lowest handle is 100mm from the floor, tie a knot above the connector and cut off any excess cord at the top once tied.
5. Replace the faceplate, test the unit by pulling on the cord, the LED indicators should light.

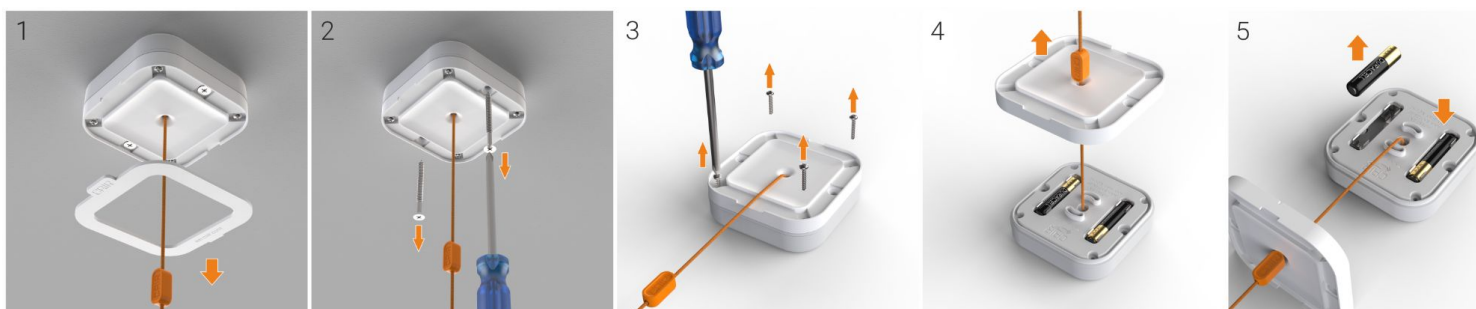


Assigning the Reach to a Notifier or other receiving system

1. Prepare the Notifier/other system by entering registration mode.
2. Activate the Reach by pulling the cord, the LED should light up
3. The Notifier/other system should acknowledge the new device.

Changing the Batteries on the Cair Reach

1. Remove the faceplate
2. Unscrew the 2 fixing screws and remove from the ceiling/wall
3. Unscrew the 4 corner screws
4. Remove the front case - Take care to gently separate, the front case may be hard to remove, this ensures waterproofing.
5. Pull out the exposed AAA batteries and replace with fresh ones, any way around
6. Reassemble the device, reinstall and test



Packing for shipment

The equipment containing cells or batteries must be packed in strong rigid packaging and must be secured against movement within the outer packaging to prevent accidental activation. The sender's name and return address must be clearly visible on the outer packaging.

Safety

Do not dismantle or alter the unit. Do not open the case, only to change the battery.

Declaration of Conformity:

Hereby, Cair (UK) Ltd declares that the radio equipment type, Cair Reach is in compliance with Directive 2014/53/EU

Disposal

All electronic waste should be disposed of in accordance with the latest legislation.

It must be disposed of within the electrical and electronic waste stream and not be disposed of in the normal waste stream. Recycling electrical waste products help to conserve natural resources and prevent adverse effects on the environment. Contact your supplier should you require more information.

